

HOSPICE NEWS

November 2022



We had a Ball!

Welcome... from the Chief Executive

We certainly have a very informative Hospice News this month as so much has been happening. Many thanks to Jenny and Lizzie for a great round up across all areas of our organisation.

A highlight for me was our Ball - it was a fantastic evening and well attended by some very generous supporters. The Fundraising Team had worked very hard and the event was a great success.

We have also received some fantastic donations from local families and it has been lovely to meet up with them and hear of the efforts they have taken to fundraise and support us, a massive thank you to our supporters.

Our Rehabilitation Kitchen, funded through a grant is complete and this is a great asset to our care facilities and offers additional facilities to optimise independence and support discharge of patients.

Best wishes,

Karen Griffiths



Our Moonlight Masquerade Ball is a huge success

A huge thank you to everyone who attended our Moonlight Masquerade Ball, we've raised an amazing £25,000!

We're delighted to share photos from the evening, which you can buy [here](#) 50% of proceeds will be donated to Lindsey Lodge. Thanks so much to Neil from Benton Images from photographing the evening free of charge.



News

Cheers for 30 Years - we surpassed our target

We're delighted to reveal that our #CheersFor30Years campaign has surpassed its target and has raised an incredible £333,000 for Lindsey Lodge! Thank you so much to each and everyone of our supporters for helping us to achieve this during our 30th year of care, we truly couldn't do what we do without you.



Hospice Care Week 2022

We supported #hospicecareweek here at Lindsey Lodge! Our team decided to #wearityellow to support the fantastic work of hospices around the UK!



Three Peaks fundraiser raises £1,702

A huge well done and thank you to Harry Coult, Lewis Dixon, Liam Walker and Kevin Foulston for completing the National Three Peaks. Together they have raised an incredible £1,702 for Lindsey Lodge, thank you so much!



Festival of Lights 2022

We're looking for people to take part in our Festival of Lights 2022! Simply decorate and light up your house, tree or car and raise funds for Lindsey Lodge using buckets or JustGiving. We'll provide you with everything you need to get started. Register for free [here](#)



Local family raise £16,350

A kind-hearted family have raised over £16,350 for a North Lincolnshire charity in memory of their loved one. Zoe, Dec and Nicole Marshall held a charity night at Winterton Rangers FC in memory of Pete Marshall, their much-loved husband and father, who passed away aged 53 in 2021. Read more [here](#)



Stephen bungee jumps for Lindsey Lodge

A huge well done to Stephen Clark for completing a bungee jump in Whitby! Stephen has raised over £200 for Lindsey Lodge so far, a big thank you from the everyone at the Hospice.



Join a Supporter Group

If you're interested in our community fundraising activity, our Supporter Groups could be perfect for you! Supporter Groups are the local representation of the Hospice and the fundraising team will work closely alongside your group to ensure that you meet your full potential. If you're interested in joining or starting a Supporter Group, please email e.hartley2@nhs.net



Ian becomes a Hospice Hero

Thank you and well done to our latest Hospice Hero, Ian Barley! Ian ran the Humber Bridge Half Marathon in aid of Lindsey Lodge and has raised over £600



News

Advanced Care Planning Training

We recently provided Advance Care Planning Training for social care staff in our local community. This training is all about developing the confidence and communication skills to enable care staff to have conversations with people who are living with a serious, or life limiting illness, about considering and recording their preferences and wishes for their future care and treatment, particularly if they become unable to make these decisions for themselves. Full details [here](#)



Skyline Internet Limited join the Business Club

We're delighted to welcome Skyline Internet Limited to the Lindsey Lodge Business Club! Find out more about our Business Club [here](#)



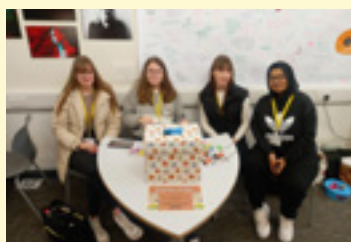
Harvest Festival assembly raises hundreds

A big well done and thank you to the little heroes at Bottesford Junior School for raising £370 for Lindsey Lodge by selling refreshments at their Harvest Festival assembly!



Students host fundraising event

Thanks so much to students at John Leggott College for hosting an event as part of their business course to raise funds for Lindsey Lodge. They used their skills to create a profit and loss, cost their games accordingly and advertised the event to their peers.



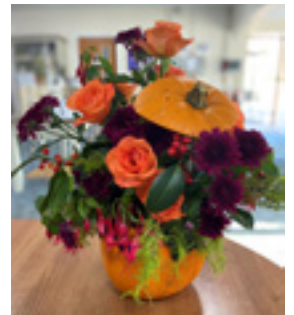
Hospice Heroes give birthday boost

We've been given a £3,000 birthday boost after a group of youngsters spent their summer holidays fundraising. Over 50 little Hospice Heroes answered the call to take part in our 'Kid's Summer Challenge'. All of the Hospice Heroes enjoyed a special thank you party The Pink Pig Farm to celebrate their success and share their fundraising stories with each other. More [here](#)



Wellbeing get creative at Halloween

Our Wellbeing patients were busy in the run up to Halloween, creating a beautiful pumpkin flower arrangement and crafts, enjoying entertainment and spooky-themed activities.



Ladies who do lunch boost funds

A big thank you to June Marshall and the Ladies who do lunch for raising an amazing £644 for Lindsey Lodge with their latest lunch!



Christmas hampers - can you help?

We're on the lookout for Christmas treats to fill our Hampers with! We're particularly looking for the following items: • Wine • Chocolates • Biscuits • Christmas Pudding • Mince Pies



If you have any of the above items or any other Christmas treats that you would like to donate, we would be very grateful! Any donations can be dropped off at Reception.

News

Barton Summer Darts and Dominoes League raise thousands

Thank you so much to the Barton

Summer Darts and Dominoes League for raising an incredible £4,832 for Lindsey Lodge, your support is greatly appreciated by everyone here at the Hospice!



Win big this Christmas

Have you entered our Christmas Superdraw yet? Tickets are just £1 each and available to purchase online, all you need to do is click [here](#)



Jog on January is back

Registration for Jog on January 2023 is NOW OPEN! We're inviting you to run, jog or walk your way to 5, 10 or 15k! Whether you've never run before, or want to get active again for 2023, this is the challenge for you. Sign up for just £10 [here](#)



Wellbeing Team keep our patients informed

Our Wellbeing Team are always looking at ways to keep our patients and volunteers informed about what's on and when, as well as updates about changes in the Team. They've put in place a monthly newsletter, which has been very well received by everyone. This month's edition saw the dates revealed for our very popular Christmas parties!



Dignity Champions go the extra mile for Lindsey Lodge

Lindsey Lodge's Dignity Champions are a group of eight healthcare assistants, who, as well as ensuring that patients, families and carers continue to consistently receive the best possible patient-centred care and support, will be looking at ways to enhance the quality of its care, with regards to choice, dignity and respect.



Lindsey Lodge Director of Clinical Services Helen Turner said: "We are already extremely proud of the high standards of our care at Lindsey Lodge and I'm delighted that so many members of our team have signed up to become Dignity Champions.

"They will support our whole team to ensure we put dignity and respect at the heart of everything we do, to enable a positive experience for everyone who receives our care." More [here](#)

Fire and Brick Walkers do us proud!

A huge thank you to all of the brave brick and fire walkers who bared their soles on Sunday 23 October.



We had a fantastic evening with all of our fundraisers, their families and supporters. The event was topped off with a fabulous low noise firework display, which meant the night went off without any loud bangs!



We're supporting Inter Faith Week 2022

It's Inter Faith Week 13-20 November, which aims to strengthen good inter faith relations at all levels, increase awareness of the different and distinct faith communities in the UK, in particular celebrating and building on the contribution which their members make to their neighbourhoods and to wider society and increase understanding between people of religious and non-religious beliefs

Inter Faith
Week



Pastoral Care at Lindsey Lodge

Spiritual care plays an important role in our holistic approach to palliative care at Lindsey Lodge. We care for a diverse and multi-cultural community and recognise the need to ensure we aim to support the spiritual needs of our patients, families, carers, staff and volunteers.

We understand that spiritual care means different things to different people and believe we all need to have a sense of peace and security when faced with the emotional difficulties of serious illness, loss, bereavement and death.



Spiritual Care
Lead Paul Braisdell

For some people spirituality might involve religion, but it's not the same as religious beliefs. Spiritual issues can affect everyone - people do not need to be religious to have spiritual needs.

Our Pastoral Team here at Lindsey Lodge is led by Spiritual Care Lead Rev. Paul Braisdell, and includes our Hospice Chaplains: Rev. Julia Clarke; Rev. Ken Hague; Rev. Joy Osbourne; Rev. Alice Nunn, Rev Pat Cooke and Captain Sean Andrews. They are joined by Family Support Counsellor Carolyn Connor and Social Worker Jackie Kelly. The Team also acts as a link to faith and belief group leaders in the community and can arrange for them to visit Lindsey Lodge.

Lindsey Lodge Spiritual Care Lead Paul Braisdell said: "Our support is available to anyone, regardless of their faith, culture or background.

"Spiritual care can often become more of a focus at times of emotional stress, physical (and mental) illness, loss, bereavement and death.

"Coming under the care of the hospice can raise all sorts of worries and concerns, and these may be as distressing as the physical symptoms of illness. Such concerns are often expressed as questions about the illness, hopes and fears, the meaning and purpose of life, and what the future holds for family and loved ones.

"Our role is to 'be there', to listen compassionately and provide person-centred, spiritual, religious, cultural and emotional support to all patients, families, staff and volunteers, by helping them to express and explore their thoughts and feelings about the past, present and future as they arise, in order to make sense of things."

Lindsey Lodge also offers people the use of our Reflection Room, which is based in our Wellbeing Centre. It offers a safe, quiet multi-faith space for contemplation, reflection and prayer.

Retail News

We need your donations

Having a pre-Christmas clear out at home?



We need your charity donations! We need good quality furniture, clothing, toys and bric-a-brac. You can donate to our Charity Shop & Donate Warehouse, or any of our shops. **Please note our shops cannot accept donations of large furniture.** Please follow this link to see where to donate and useful information about donating to Lindsey Lodge [here](#)

Have you visited our Charity Warehouse Shop & Go yet?

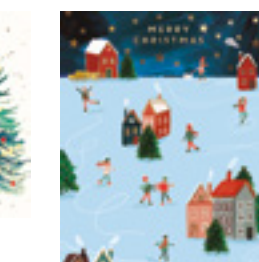
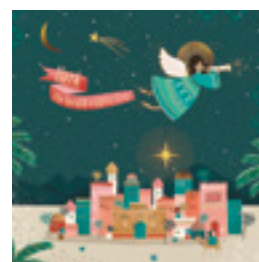
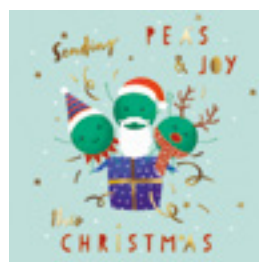
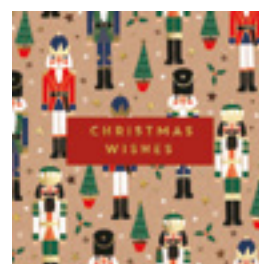
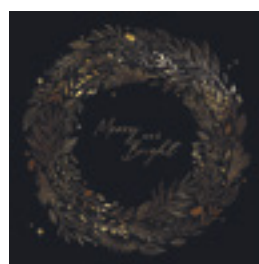
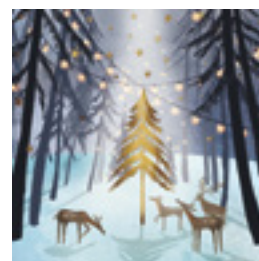
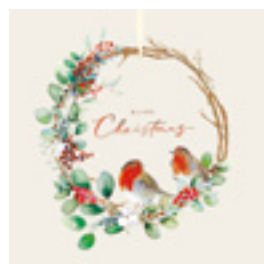
Have you visited our Charity Warehouse yet? As well as stocking preloved fashion, books, toys and homeware, we've also got a wide selection of furniture and household goods for you to peruse at your leisure, please pop in Monday to Friday, between 10am and 4pm.



Open Mon to Fri, 10am to 4pm, 3-4a Crosby Road, Southcharge DYO5 8SF

Christmas cards

Christmas is coming! We have 12 hand-picked Christmas cards to choose from this year and all proceeds go directly to Lindsey Lodge care. You can find our Christmas cards in our shops, online and in reception here at Lindsey Lodge.



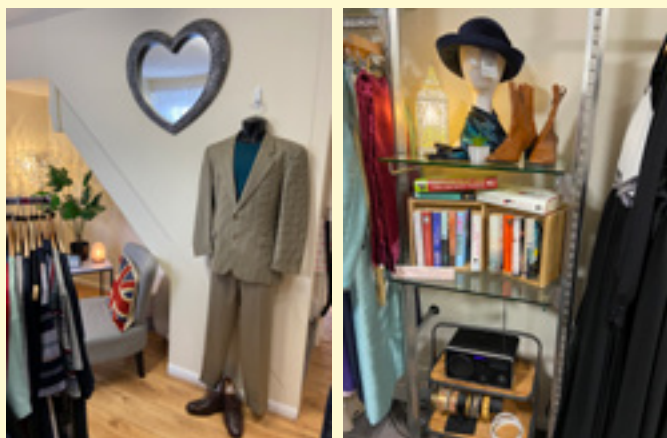
Retail News

Check out our new range of stock in Brigg

We've had a little change around in our Lindsey's charity shop in Brigg...

As well as providing a fantastic selection of ladieswear, we've extended our menswear department and added a range of gifts, books, games and accessories to our range!

Please pop in and take a look - we're at 64 Wrawby Street, Brigg.



Shop online...

Want to support Lindsey Lodge from the comfort of your armchair, or looking for something very specific?

You'll find a huge selection of new and pre-loved fashion, collectables and sought after memorabilia, when you visit our ebay store

[here](#)

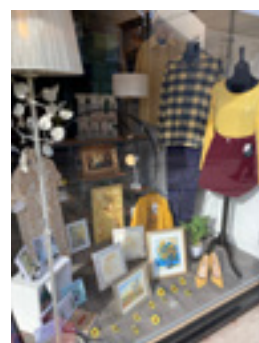
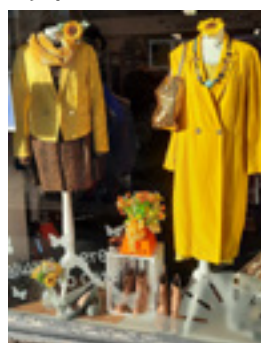


Looking for books and games? Please peruse our virtual bookshelf ebay site [here](#) for some extra-special, or rare books...

Well done on our windows!

Our Lindsey Lodge Retail Team love a challenge, so when we throw down the gauntlet to dress their windows for key dates or events, they never let us down!

In the last month they've gone yellow to support Hospice Care Week, spooktacularly supported Halloween, and this week, they've done some beautiful displays to mark Remembrance Sunday this weekend - we're very proud of all of the hard work!



Your Opinion Counts...

If you'd like to share your experience with us, please contact us on llh.enquiries@nhs.net, leave a personal message on our social media channels, or phone Jenny Baynham or Lizzie Orwin on 01724 270835.



"The friendliness of everyone, the pleasant working environment and the knowledge that I am doing something to help, I know this is appreciated."

Volunteers' Survey

I am writing to let you know how much I appreciate the outstanding service that you have recently provided me at the Lindsey Lodge Breathlessness Clinic. Even though I have only attended a few appointments with you, I have learnt so much about my respiratory condition and how to help deal with it. This is due to your in-depth knowledge and attentive help and guidance. Your service has provided me with information that other NHS services have been unable to.

Because of your efforts, and with a few more appointments I am hoping to be able to cope much better with my conditions.

After my 4 week stay in the Butterfly Wing, which gave me amazing help, care and confidence, I decided to come to the Wellbeing Centre on a Thursday because it's nice to get out, meet people probably in the same situation and know people are there that care for you besides your family/friends.

Big thanks to Jo and Charlotte who persuaded me to come to the Centre

Fantastic night, such good fun and all for a great cause x
Myself, Family & Friends had a lovely evening

Moonlight Masquerade Ball

CHRISTMAS IS COMING!



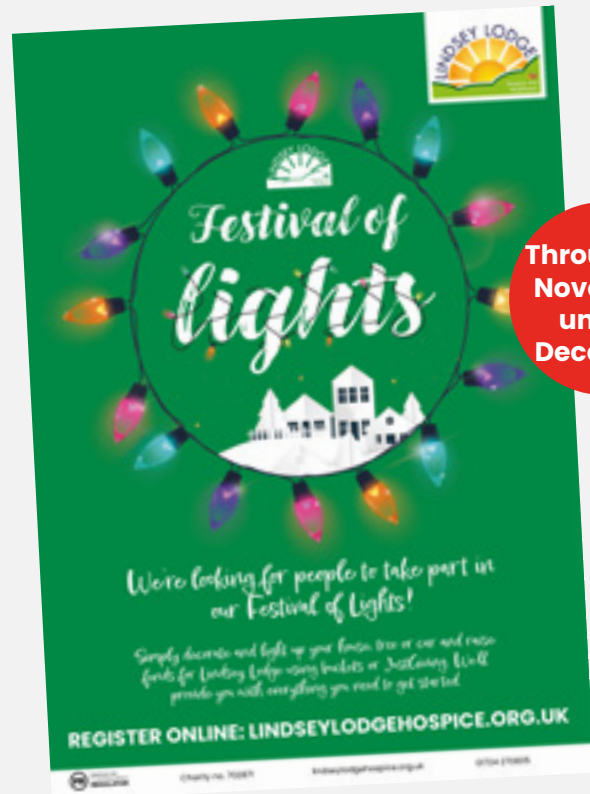
**Saturday
26 &
Sunday 27
November**



**Draw date
Wednesday
21 December**



**Thursday
15
December**



**Throughout
November
until 19
December**

**Download
our Festive
Fundraising
pack here**