

HOSPICE NEWS



April 2023



**WE'VE LAUNCHED OUR
NEW-LOOK
OUTPATIENT SERVICE**

Welcome... from the Chief Executive

It's April already, the year is flying by and we achieved so much!

This month's Hopsice News has lots of informative updates, so please take time to have a read.

I draw your attention to the forthcoming Open Day on 11 May, we have a lot to celebrate: The Coronation; Dying Matters Week; Nurses' Day and the Big Help Out in one week! We therefore have chosen to mark all occasions and will open our doors to our community who will be able to join us on a Hospice tour on every hour

Best wishes to you All
Karen Griffiths



We organised a very special wedding...

On Friday 31 March our whole Lindsey Lodge team came together to create a special ceremony for a patient and family to fulfill their wishes, which was beautiful and created a special piece of Lindsey Lodge history.

The Clinical team (as they always do) handled this with such care and compassion, coordinating the plans and working closely with the family to ensure every detail is captured and created.

The Fundraising Team worked their magic, transforming one of our Butterfly rooms into a ceremony space, complete with an aisle, flowers, lighting, music, children's activity hampers and decoration.

The Retail Team supplied the Bride and Grooms outfits with full suit coming from our Warehouse and the Dress and accessories being supplied by our Brigg Store.

The Catering Team created the wedding breakfast for the guests, supplied the drinks and made sure everyone was looked after. Julia from our spirituality team lead the service with support from our local registrar. Thank you for creating time to make this so special.

A special thank you to Calvin Taylor Lee who dropped everything to be the official wedding photographer, Cakes by Andrea who provided a stunning wedding cake, Balloons galore for the balloon arch, decoration, wedding box and guest book, Wortley House Hotel for the red carpet and Sims flowers for the bouquets and button holes.

Deputy Chief Executive Tom Moody said: "I have been in awe and so proud to see everyone come together to create this special moment - this is why we do what we do. Going above and beyond, every day to make sure that everyone in our care receives nothing short of outstanding."



News

We've launched our new-look Outpatient Unit

Patients referred to the service will now be offered two distinct pathways – Health based, or Wellbeing based following their initial assessment and linked to the individual goals they decide to set with guidance from the Lindsey Lodge medical team.

Lindsey Lodge's outpatient facilities offer holistic support with both the physical and emotional symptoms, along with goal setting, advanced care planning, memory work and access to social group work and activities. They also provide specialist support for patients who may have difficulties with their care needs, or who have frequent hospital admissions due to a specific symptom, as well as those patients where a recent diagnosis requires radical treatment, which may have overwhelming symptoms.

Lindsey Lodge Clinical Director Helen Turner said: "We are excited to be launching our new-look Wellbeing Service. We have introduced a new referral form, which is available to download from our website [here](#) and provides a single point of access into the service into our Hospice Co-ordination Centre.

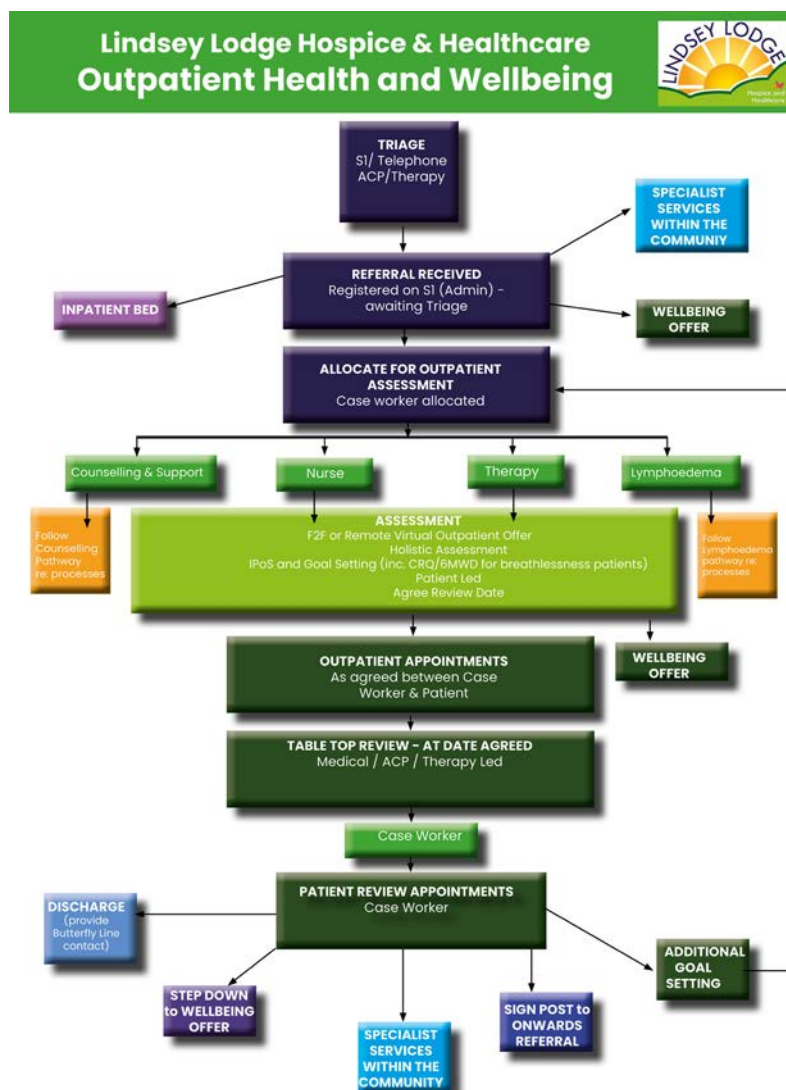
"All outpatients will be triaged by our therapy / medical team to understand their individual patient-led goals, before being offered two distinct routes into our service, which we believe will improve their overall patient experience."

Patients who follow the Wellbeing pathway, will be supported by Lindsey Lodge's healthcare assistants and advanced assistants, who will provide an environment that will enhance their overall psychological wellbeing, through regular social interaction, and meaningful activities. It will offer an opportunity to explore reintegration in the community, help to alleviate boredom, prevent social isolation and provide much-needed carer support.

Helen said: "We'll be offering a daily plan of activities including chair based exercise, crafting, gardening, memory making, visualisation and relaxation, which patients can attend, as well as time set aside each day for clinics with our medical team and advanced care practitioners."

The Health pathway will offer patients interventions led by their own individual specific goals and incorporate an in-depth holistic assessment, with standardised outcome measures. These will be delivered through outpatient appointments and reviewed within the period agreed at the point of assessment.

Helen said: "This patient centred approach offers patients the opportunity to set their own goals, and review their progress. Our medical team and advanced care practitioners will provide oversight and guidance with intervention to support achievement of their goals, with time set aside to review all patients on a weekly basis with individual case workers. We will work closely with local health partners to ensure patients who are eligible for our service, receive the best possible care and support."



News



Thanks to everyone who took part in our Care for a Cuppa campaign!

A huge thank you to everyone who organised, or took the time to attend a Care for a Cuppa event during March, the grand total raised currently stands at over £3,000! Here are a just a few of your photos...



Brigg WI held a coffee morning attended by Brigg Mayor Cllr. Brian Parker.



Crowle Pavillion



Burton Village Hall



Freemantle Ltd



First Avenue Training Ltd



Nisa Locally Partner Support Centre



Epworth Old Hall



Lindsey Lodge Meet & Eat Restaurant



Three B's Bakes at Moe's Caffe Society

THANKS FOR SHOWING YOU CARE

News

Lindsey Lodge at Easter

Thank you to everyone for ensuring our patients and their families were able to enjoy special memories at Easter. We really couldn't do what we do without the support of our local community, so here's a roundup of how you've helped in the past month...



Volunteer Anne Fogg uses her creative skills to make our hampers and the results are always fabulous!



We had a very special visit from the Easter Bunny, thanks to Penny Goulding



HCA Louise Ledgerwood made these lovely Easter gifts for all of our patients



Anita from Applegreen Petrol Station popped in with lots of Easter goodies



Amy from Scunthorpe Tesco Extra is pictured with Easter eggs they donated



Our patients enjoyed the sunshine and had great fun on their Easter Egg Hunt

News

Will you Glow Crazy for this year's Glow Walk?

We're inviting walkers to 'glow crazy' and support our annual sponsored walkathon on Friday 8 September.

Registration is now open for our iconic Glow Walk, which has raised over £615k in funds for us over the years.



Lindsey Lodge Head of Fundraising Kirsty Walker said: "Our Glow Walk is one of the best loved mass participation events in our calendar, and last year saw a record number of over 550 walkers taking part, raising over £46k! So we're hoping our local community turn out to support us again this year."

She added: "As well as our traditional 10 mile route, we're offering a shorter five mile route again this year, to encourage as many people as possible to get involved and experience the very special atmosphere that the Glow Walk evening brings."

As well as pre-event music and a fun warm up, glow walkers are encouraged to literally light up the night with their outfits and accessories, whilst raising sponsorship to provide the much-needed funds Lindsey Lodge needs to continue to provide its care.

Kirsty said "For the last mile of the walk we are offering our walkers the option to walk with a memory lantern to remember their loved one."

"When they return to the Hospice there will be a designated area in our garden where they leave their candle on the letters spelling out 'Glow' and write a message if they wish. There will also be a screen sharing memory photos of our walkers' loved ones, which they can send in to us in advance."

Entry for the Glow Walk costs £15 per person, which is discounted to £12.50 per person for teams of over five people. This also includes a free T-shirt, as well as a finisher's medal for everyone who completes the walk more [here](https://www.lindseylodgehospice.org.uk)

Well done to our Lottery Jackpot winner!

Mrs Gill Nelson came to Lindsey Lodge to collect her cheque and is delighted with her jackpot win.



Gill is a former member of the Lindsey Lodge team, having worked in our Lymphoedema Service for over 14 years, she retired just over seven years ago, so is familiar with how important the Weekly Lottery is to us in providing our much needed funds.

She said: "Having worked for Lindsey Lodge, I know what an important role it plays in supporting local patients."

"My husband I have been playing the Lindsey Lodge Lottery for a number of years, so it's lovely to have a jackpot win!"

"We'll make sure we spend the money on something special!" Sign up for our Lottery [here](https://www.lindseylodgehospice.org.uk)

Our Car Boot sales are well underway...

We held our first Car Boot Sale of the season on Sunday 2 April, and it was a beautiful sunny morning for the sell-out event. Still time to book for future events [here](https://www.lindseylodgehospice.org.uk)



News

Our patients have been busy...

From gardening to crafting, and even some lovely entertainment, our patients have had a busy month! Here's a round up...

The Polytunnel is proving popular...



St Patrick's Day was great fun!

More beautiful artwork was created



A huge thank you to the pupils and staff from Gunness and Burringham Primary School for performing some beautiful songs and reading with our patients

News

Have your say at our Hospice User Group

We're inviting people with real user experience of our care to join our new Hospice User Group to help develop and inform future services.

Lindsey Lodge

Hospice and Healthcare's Hospice User Group (HUG) is open to anyone who has used its services, either as a patient, family member, carer, or loved one of a patient.

It will meet in Lindsey Lodge's Wellbeing Centre on Thursday 27 April at 4pm, then on a quarterly basis, to encourage local people to have a voice in providing valuable feedback and insight into how Lindsey Lodge can continue to improve patient care and support for families. Full details [here](#)

Thanks for supporting Lindsey Lodge

A huge thank you to Appleby Frodingham Theatrical Society for donating £300 to Lindsey Lodge following the closure of their group. We are extremely grateful for their support.



Lindsey Lodge Hospice & Healthcare Hospice User Group



We want your expertise and insight into how we can improve patient care and family support



Our aim is to listen and learn from real user experience to help make continuing improvements to the services we provide to shape the future of Lindsey Lodge

To join, or for more information about our Hospice User Group, please contact the Director of Clinical Services on 01724 270835 ext. 258, or email lh.hospiceusergroup@nhs.net

We're the Spring Community Champions!

We are delighted and very grateful to have been chosen by Lincolnshire Co-op as their Spring Community Champions! The Lincolnshire Co-op colleagues all agree that Lindsey Lodge is a special cause and say how pleased they are to be supporting us - so many thanks!



Business Club Meetings in full swing

Thanks to everyone who attended our networking meeting in March. The Crosby Collective was a great venue to host the event and thanks to Helen Armstrong for sponsoring the coffee.



We enjoyed some casual networking and then had a fantastic talk from Nichola Threadgold, a very personal, touching and inspirational speech about being a woman in the business world. The highs and the lows, it was such a thought provoking speech. If you'd like to join our Business Club, click [here](#)

Still time to sign up for our Wing Walk 2023

Could you be one of our daredevil fundraisers who take to the skies and wing walk on a vintage Stearman aircraft to fly high over the Lincolnshire countryside on Saturday 8 July? Register, or find out more [here](#)



News

Sign up for our Three Peaks Challenge



BACK BY POPULAR DEMAND WITH AN EXCLUSIVE DEAL: FREE SPACES

Each participant will be expected to raise a minimum of £150 in sponsorship to cover the costs

PLUS rewards based on the sponsorship level you achieve:

- £150 earns you your medal and certificate on completion of the challenge
- £300 will get you a personalised Lindsey Lodge water bottle
- £500 will get you your very own Challenge with Lindsey Lodge Hoodie



Back by popular demand on 19 August 2023... Our Yorkshire Three Peaks Challenge 2023 - with an exclusive deal: FREE spaces! That's right - no sign up fee at all!

Each participant will be expected to raise a minimum of £150 in sponsorship to cover the costs, but there are several rewards based on the sponsorship level you achieve. This is a fantastic opportunity to 'dare for care' so please register early to avoid disappointment [here](#)

Dennis Nash Art Sale

Please support this Art Sale at Scawby Village Hall on Saturday 15 April 2023, between 10am and 4pm featuring the work of internationally renowned artist Dennis Nash and local artist Jean Blockley, raising funds for Lindsey Lodge.

THE ART SALE DENNIS NASH

Internationally Known Artist
Selling Hundreds of original Paintings...

Scawby Village Hall
April Sat 15
Open 10am till 4pm



Carers Together Group

We're working in partnership with Carers' Support Centre to welcome adult carers of people with life limiting conditions to this new

Carers

Together Group at Lindsey Lodge. The first meeting is 20 April, so please contact us if you'd like to attend.



A GROUP FOR ADULT CARERS OF PEOPLE WITH LIFE LIMITING CONDITIONS

Lindsey Lodge
Thursday 20th April
10:30am to 12:30am



If you would like to attend, call the Carers' Support Service on 01652 650585 or Lindsey Lodge on 01724 270835

Thanks to the ladies for lunching

We'd like to say a massive thank you to everyone who attended the recent Ladies' Lunch at Ashby Decoy Golf Club in support of Lindsey Lodge! The event raised a fantastic £500, so we are extremely grateful for all of your support!



St Bede's students support patients

We had a very welcome visit from Mrs Stones and two pupils from St Bede's Catholic Voluntary Academy in Scunthorpe during their Easter holidays, to bring a lovely donation of books, toiletries, cosmetics and funds for our patients - they also brought them handmade Easter cards too! Thanks everyone involved for your amazing support!



News

Working in partnership to provide Psychological Therapy at Lindsey Lodge

Lindsey Lodge offers a holistic approach to supporting patients and families who are dealing with the diagnosis of an end of life, or life-limiting condition. As well as medical and nursing care, it is essential that people receive psychological support to enable them to deal with different emotions associated with end of life care.

Principal Health Psychologist Andrea Jones and Psychologist Medical Practitioner Seamar Bhullar, who are employed by Northern Lincolnshire and Goole NHS Foundation Trust (NLaG) in its Department of Psychological Medicine, visit Lindsey Lodge over two days each week to provide one-to-one psychological therapy.



Andrea Jones said: “People who are affected by cancer, or a life-limiting illness can experience difficult feelings such as adjustment problems, anger, anxiety and low mood. These feelings are completely normal, but it’s important for staff to be aware if patients are having these feelings, so that we can support them in the best possible way”.

“We’ve therefore worked in partnership with Lindsey Lodge’s clinical teams including the Family Support Service, to develop an ‘Emotional Pathway’ for patients visiting Lindsey Lodge, which makes sure that patients have access to psychological assessment and intervention where needed. A specially designed structured assessment is carried out by trained nursing and therapy staff from the Wellbeing Centre and Inpatient Units.”

Andrea has been supporting specialist psychological support within Lindsey Lodge for a number of years she also provides advice on anxiety management for its Breathe Easy Enablement Programme (BEEP).

Seamar’s role is relatively new, and she brings a wealth of experience from her previous position as Clinical Nurse Specialist in Gynae-Oncology at the acute trust.

Seamar said: “I worked with cancer patients for over six years in my nursing role, so I fully understand the pathways for their care and treatment. This additional knowledge brings another dimension to the psychological service we provide to patients at the Hospice. In my previous role, I mainly talked to patients over the phone, here at Lindsey Lodge it’s lovely to be meeting them in person, in such a supportive environment when we are here.”

As well as working face-to-face with Lindsey Lodge patients, Andrea and Seamar provide a presence at the Palliative Care Multi-Disciplinary Team (MDT) for advice on psychological need. The Department of Psychological Medicine, in which they are based, also delivers a rolling programme of two-day ‘Level 2’ Psychological Skills training in cancer and palliative care. This training covers psychological assessment, formulation and intervention and has been accessed by a number of Lindsey Lodge staff.

Andrea said: “Patients are often having difficulty coming to terms with their diagnosis or situation. We provide a personalised approach with each patient to meet their unique set of emotional needs and we draw on a range of evidence-based therapy models and techniques including Cognitive Behaviour Therapy (CBT) and Acceptance and Commitment Therapy (ACT). We aim to help people to deal with the emotional challenges they are facing as a result of their physical health problem and to help them develop a sense of control. This means that they are more able to move away from a negative focus and to concentrate on their positive values and goals.”

Andrea and Seamar work in partnership with the Lindsey Lodge team, providing advice and consultation regarding referrals, as well as delivering one-to-one sessions with patients. Read more [here](#)

News

We're getting Coronation Ready...

We're looking forward to the King's Coronation!

Please join our Meet & Eat Restaurant Team in celebrating the King's Coronation by visiting us for Afternoon Tea! Available Monday 1 to Friday 5 May. Priced at just £28 for two people, please book ahead to avoid disappointment.

Please note we will be closed on Saturday 6 May and re-open as normal for Sunday Lunch (bookings only) on Sunday 7 May.



We're having an Open Day

In conjunction with the Coronation Celebrations, May also sees us marking some other important events Dying Matters Week, The Big Help Out and International Nurses' Day, so we've decided to hold an Open Day here at the Hospice to celebrate these events, as well as raise awareness of what we do on Thursday 11 May, between 10am and 4pm, where we will be providing Hospice tours on every hour, as well as an opportunity to talk to our team, or find out how you can get involved in our fundraising events, or become a volunteer.



Vivienne supports Lindsey Lodge on her 80th birthday...

Vivienne Coult recently celebrated her 80th birthday and very kindly chose to support Lindsey Lodge with a birthday collection and raffle, raising a fantastic £500! A huge thank you to Vivienne and all of her loved ones for this very generous donation!



March was Make a Will Month

We teamed up with four local solicitors in a month-long campaign to highlight the importance of making a Will during March. Many thanks to Symes Bains Broome, Sills & Betteridge Solicitors, BRR Law Solicitors and Tyto Law Solicitors for donating 70% of their standard fee for a single or mirrored Will to Lindsey Lodge, when booked as part of the campaign.



Please sponsor our very own It's a Knockout Team...

We're gearing up for our It's a Knockout event on Friday 23 June - and we now have our very own Hospice team Lindsey's Angels taking part! They've set up a Just Giving page to start fundraising, so please give them your support [here](#)



Look out for more information about the event on our social media channels in the coming weeks...

News

Farewell to Jane Lacey-Hatton

We said farewell to our Workforce Manager Jane Lacey-Hatton in March. Jane has been part of the Lindsey Lodge Senior Management Team for over five years, and as well as providing support and expertise with all workforce activities, she has been instrumental in setting up our Workforce and Remuneration Committees, as well as implementing our Birdsong satisfaction surveys and our recent Wellbeing activities. We would like to say a huge thank you to Jane and wish her well for the future.



Welcome to our new Director of Workforce and Resource Robert Marshall...

Robert joined the Executive Team in March, here he tells us a little more about himself...

"My name is Robert Marshall I am the new Director for Workforce and Resource. This is a new position within the organisation and is part of the executive team, it is an amalgamation of a number of roles with oversight of Finance, Support Services and the Workforce team. I am based upstairs in the main building and without meaning to sound cliché, my door is always open so please say hello if you are passing and I hope to meet you all over the coming weeks."



"For the last seven years I have worked in the public sector; education and local government as 'change agent' (sounds more exciting than it is!). My role has been about sharing best practice, modernisation, organization growth, performance and development. help and support."

"Prior to this I spent twenty years in the private sector, working for IKEA, Dixons Stores Group and British Garden Centers, working on operational, commercial and people projects national and across the globe."

"My passion has always been on the people within an organisation and working with individuals and teams, no matter the sector to help and support."

"On a more personal note, I have two amazing daughters aged 14 and 16 who keep me busy and I am a keen enthusiast of music and play a number of brass instruments in groups across Lincolnshire. You will often see me playing at concerts, fairs and celebrations so please say hello."

"Finally, what brings me to Lindsey Lodge Hospice and Healthcare? The easiest way for me to answer this question is to outline my first week at LLH. It started with meet and greets with most of the executive team and meetings trustees, discussing on-going plans, future projects and even some 'blue-sky' thinking. I then got involved with some very operational aspects of my new role and I was fortunate to be a part of the recent wedding. The work that was done in such a short space of time, by so many amazing people across all departments really overwhelmed me."

"As I said earlier, people are what makes me get up in the morning, Lindsey Lodge Hospice and Healthcare is more than a place of work, everything that everyone does makes a difference and you all touch so many people's lives. I came as I want to use my skills in a place that can and does make a difference and for me, last week was the best welcome gift I could have asked for, so well done and thank you."

"So, if I haven't met you yet, hello, and for those I have met, thank you for making me feel so welcome. I cannot wait to see what is next at LLHH and I look forward to meeting everyone."

More welcomes...

In the past month we have also welcomed a number of new starters in our very busy Inpatient Unit, as well as a group of new Macmillan nurses employed by the local Acute Trust to spend a day with our team to get to know each other so that we can work closely together to provide end to end patient care across North Lincolnshire.

Retail News

Our Pop up Wedding Sale ends soon!

Time is running out for brides-to-be to visit our Pop up wedding Sale at our Lindsey's charity retail shop at 64 Wrawby Street in Brigg at this one-time only clearance event.

All stock is now priced £30 and under, and this offer ends on Saturday 29 April...



**POP UP WEDDING
CLEARANCE
SALE**

FINAL REDUCTIONS

SALE ENDS SATURDAY 29 APRIL

**ALL STOCK NOW £30
AND UNDER**

EVERYTHING MUST GO!

We need your donations!

Lindsey Lodge is truly a local charity, supporting local people.

When you donate your unwanted items to Lindsey Lodge, every penny made goes towards supporting North Lincolnshire patients and families. You're also helping to reduce waste and local landfill.



**We need
your
donations!**

Please donate to Lindsey Lodge
Charity Retail Outlets

WAREHOUSE
SHOP & DONATE

Our Easter windows looked fantastic

Our fantastic Retail Team always put on a great show with their window displays, and they pulled out all the stops again for Easter - many thanks to all of them for working so hard and being so creative!



Follow us on Facebook

If you want a regular update about what's available in our individual retail outlets on Facebook, please follow like and share our pages:

[Ashby](#)
[Ashby Bookshop](#)
[Barton](#)
[Brigg](#)
[Epworth](#)
[Gainsborough](#)
[Laneham Street](#)
[Messingham](#)
[Thorne](#)
[Warehouse Shop & Donate](#)



Your Opinion Counts...

If you'd like to share your experience with us, please contact us on llh.enquiries@nhs.net, leave a personal message on our social media channels, or phone Jenny Baynham on 01724 270835.



Happy Easter to an amazing team really appreciate everything you have done and still doing xx

My sister said you didn't care for him, you cherished him and that meant so much to her and the whole family.

The staff were so patient and caring. They looked after us so well,

Always grateful for your support and services. An amazing team!

I know with these ladies I'm in excellent hands. Keep up the fantastic work ladies. You truly are angels in my eyes xx

Upcoming events...

2023 CAR BOOT DATES

SUNDAY 2 APRIL
SUNDAY 7 MAY
SUNDAY 4 JUNE
SUNDAY 2 JULY
SUNDAY 6 AUGUST
SUNDAY 3 SEPT

First Sun
April to
September

Monday 1
to Friday
8 May

Please join us for our
Coronation Celebration
Afternoon Teas!

BOOKING
ONLY



TEL: 01724
270835

£28 for
Two People

MONDAY 1 MAY TO
FRIDAY 5 MAY
FROM 1.30PM

PLEASE NOTE WE WILL BE CLOSED ON SATURDAY 6 MAY, AND
RE-OPEN FOR SUNDAY LUNCH (BOOKINGS ONLY)
ON SUNDAY 7 MAY

LINDSEY LODGE HOSPICE
& HEALTHCARE

OPEN DAY
THURSDAY
11 MAY 2023

OUR NURSES.
OUR FUTURE.
International Council of Nurses
International Nurses Day
12 May 2023



HOURLY
TOURS
10AM TO 4PM

Thursday
11 May

Take a Tour
Talk to our Team
Find out how you can get involved

ingham Road Scunthorpe DN17 2AA

www.lindseylodgehospice.org.uk

skydive



3 June
23 August
&
14 October

Flat 100 2023



Saturday
10 June

Friday 16
June



**Lindsey Lodge
Charity Golf Open**
Men's Stableford Betterball Pairs
Friday 16th June 2023
Entry Fee £30/person visitors
Elsham Members £25/person
Price includes halfway house
Food may be purchased on the day
No handicap limit
Please enter in pairs

To book your tee time and pay online
www.elshamgolfclub.co.uk/visitors/open-events

Friday
23 June



**IT'S A
KNOCKOUT
2023**

TEAMS OF 10
£100 PRIZE FOR WINNING TEAM
19 AUGUST 2023
6AM
YORKSHIRE THREE PEAKS
TEAM BUILDING & CORPORATE RESPONSIBILITY

Saturday 8
July



Wing Walk

6-1100

Saturday
19 August



**CHALLENGE
WITH LINDSEY LODGE
DARE FOR CARE!**

BACK BY POPULAR DEMAND WITH AN EXCLUSIVE DEAL: FREE SPACE
Each participant will be expected to raise a minimum of £150 in sponsorship to cover the costs

PLUS rewards based on the sponsorship level you achieve:
• £150 earns you your medal and certificate on completion of the challenge
• £300 will get you a personalised Lindsey Lodge water bottle
• £500 will get you your very own Challenge with Lindsey Lodge Hoodie

Charity number 702871
SPONSORED BY
www.lindseylodgeshospice.org.uk

Friday 8
September



**GLOW WALK
2023**
SPONSORED 5 OR 10 MILE WALK
AROUND SCUNTHORPE
FRIDAY 8 SEPTEMBER 2023
8PM • REGISTRATION 7PM
£15 ENTRY
LET'S GLOW CRAZY
MINIMUM SPONSORSHIP £50
BOOK HERE

lindseylodgeshospice.org.uk 01724 270835 Charity no. 702871

Great North Run



FINISHER

Sunday
10
September